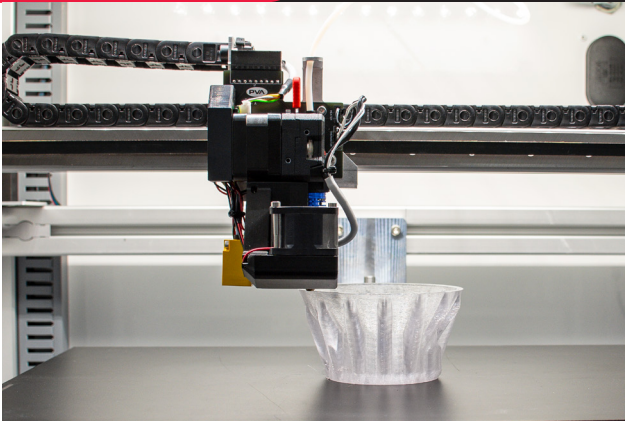




**INNOVATION. PRECISION. EXCELLENCE.**



## **Emergence PRO™** **3D Printing Platform**

### **System Specifications**

#### **3D Printer Build Volume**

480 mm X 330 mm X 635 mm (19 in x 13 in x 25 in)

#### **Power Requirements**

Volts: 120V/220V

Amps: 10A

Frequency: 60Hz/50Hz

#### **Hot End Temperature Limit**

Up to 300°C (572°F)

#### **Heated Print Surface Temperature Limit**

Up to 115°C (239°F)

#### **Layer Height**

100 - 1000 microns

#### **Print Head Speed**

Up to 400 mm/sec (16 in/sec)

#### **Available Nozzle Diameter**

0.4 - 1.5 mm (0.02 - 0.05 in)

The Emergence PRO™ Multi-Platform 3D Printing System offers intuitive 3D printing and digital solutions across multiple industries. This innovative printing platform delivers quantifiable, adjustable, and reproducible results for your modern manufacturing needs.

Emergence PRO™'s cutting-edge delivery system is equipped with a single extruder that can quickly print high-quality, durable, rigid devices. Ideal for rapid prototyping and tooling, it is a flexible yet affordable solution for those looking to augment their manufacturing process and mitigate design risks.

The Emergence PRO™ 3D Printing System offers a variety of integrated features, including:

- Heated build platform with Precision Aluminum build plate and rigid metal frame
- 5-inch touch interface with wired network connection
- Auto bed leveling
- Optical filament break detection
- Front-loading enclosed material storage
- Removable print bed
- Precision ball screw z axis
- Filament pre-tension level for repeated results

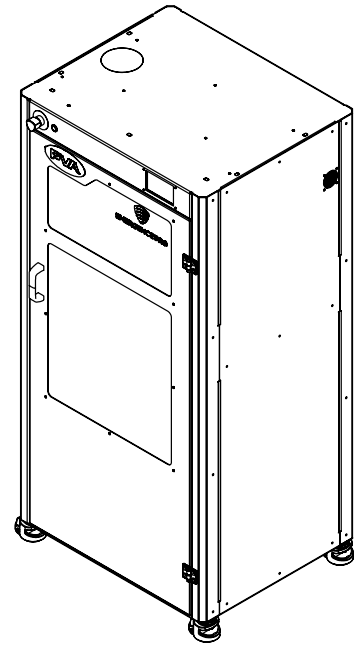
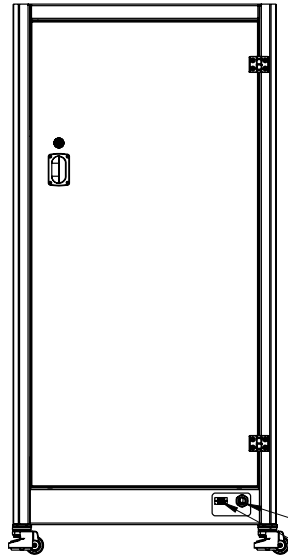
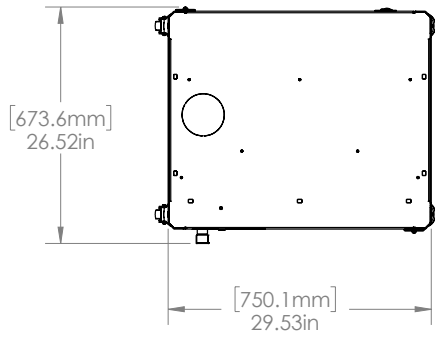
**For more information, please contact PVA at [info@pva.net](mailto:info@pva.net) or (518) 371-2684.**



REV E - 11/22

**Headquarters**  
6 Corporate Drive | Halfmoon, NY 12065  
tel +1 518 371 2684 | fx +1 518 371 2688  
[www.pva.net](http://www.pva.net) | [info@pva.net](mailto:info@pva.net)

# Printer Dimensions



POWER CONNECTION  
NETWORK CONNECTION

