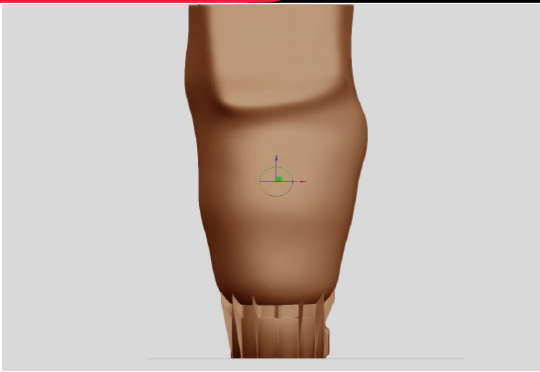




ALL THE TOOLS YOU NEED TO FABRICATE DEVICES IN-HOUSE.



## Rapid Plaster® CAD/CAM Modification Software

Rapid Plaster® is the most intuitive prosthetics modification software available. This web-based program allows practitioners to upload 3D scans and make digital modifications to models using familiar techniques.

After a model is scanned, the data can be imported via cloud or computer into Rapid Plaster®. The software offers an array of tools designed to mimic those used to modify plaster models. After the model has been modified, it can be sliced to create a printable device file and sent to the Emergence PRO™ 3D printer or uploaded to DeskProto® to convert the model to a ready-to-carve mold for the Carver PRO-ST™.

Rapid Plaster® software offers a variety of integrated features, including:

- Web-based program (no software to download)
- Cloud-based access for secure file sharing
- Touch screen compatibility
- Modification tools (move, carve/build, flatten, measure, plane cut, scale, smooth)
- Brim templates (above and below knee)
- Circumference, A/P & M/L measurements
- WalkStrong™ sockets with automatic reinforcement
- AK by Numbers to design socket based on patient measurements
- Pre-configured slicing profiles that make high quality 3D prints possible with the click of a button

## System Specifications

### Supported File Types

- .OBJ (Industry standard format for scans)
- .STL (Leading standard for digital 3D models)
- .AOP (Legacy compatibility)
- .GCODE (Industry standard for 3D printing)

### Software Environment Requirement

- Google Chrome (Latest version)

## Included Templates

### Brim Templates (Above Knee)

- Ischial Containment Brim
- Quad Brim
- Soft IC Brim
- Hybrid Brim



Ischial Containment      Quad      Soft IC      Hybrid

### Brim Templates (Below Knee)

- Posterior BK 1 Brim
- Posterior BK 2 Brim
- Posterior BK 3 Brim



Posterior BK 1      Posterior BK 2      Posterior BK 3

### Distal Attachment Templates

- WalkStrong™
- Star
- Puck Lock



WalkStrong™      Star      Puck Lock

For more information, contact PVA Med at [med@pva.net](mailto:med@pva.net) or (518) 371-2684.

REV D - 2/10/22

Headquarters  
6 Corporate Drive | Halfmoon, NY 12065  
tel +1 518 371 2684 | fx +1 518 371 2688  
[pvamed.net](http://pvamed.net) | [med@pva.net](mailto:med@pva.net)